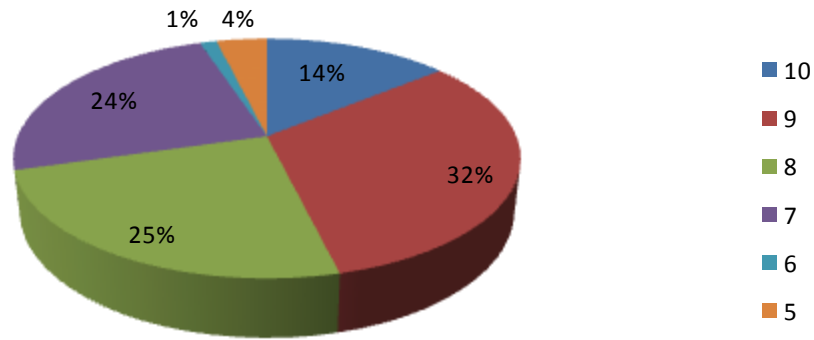
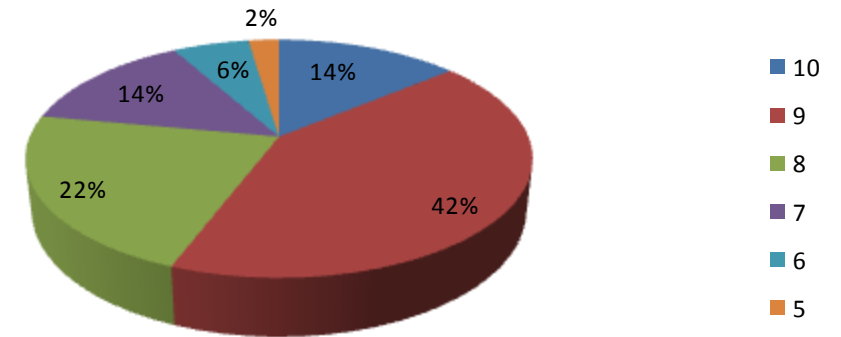


RELAZIONE di MONITORAGGIO PROVE di VALUTAZIONE 3° Bimestre – 2° Quadrimestre
CLASSI PRIME

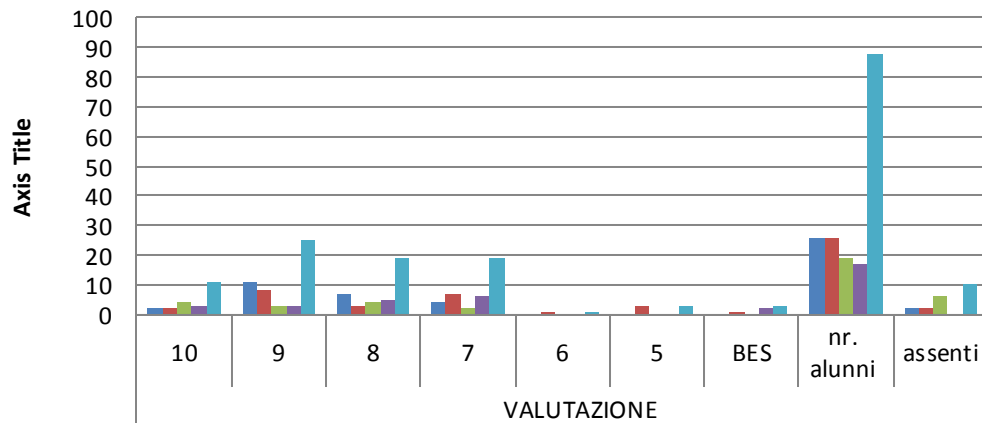
TOTALE 3° BIMESTRE - ITALIANO
Classi PRIME



TOTALE 2° QUADRIMESTRE - ITALIANO
Classi PRIME

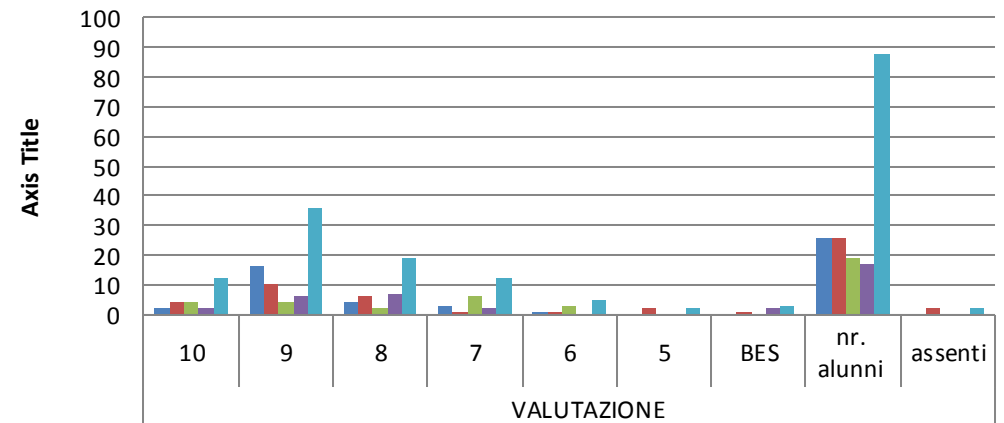


3° BIMESTRE - ITALIANO
Classi PRIME



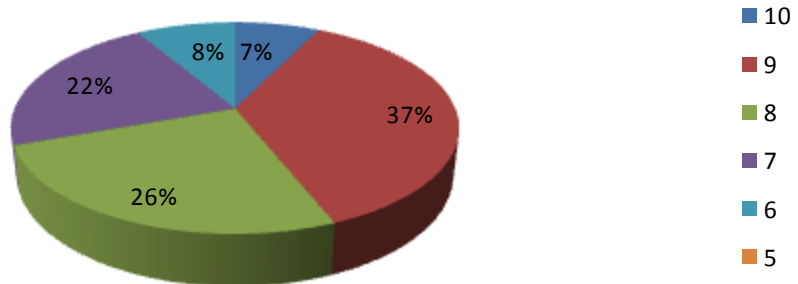
VALUTAZIONE	3° BIMESTRE - ITALIANO				nr. alunni	assenti
	A	B	C	A Costa		
A	2	11	7	4	26	2
B	2	8	3	7	26	2
C	4	3	4	2	19	6
A Costa	3	3	5	6	17	
TOTALE	11	25	19	19	88	10

2° QUADRIMESTRE - ITALIANO
Classi PRIME

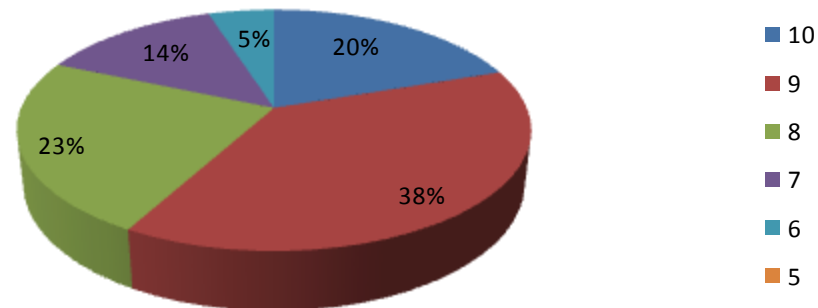


VALUTAZIONE	2° QUADRIMESTRE - ITALIANO				nr. alunni	assenti
	A	B	C	A Costa		
A	2	16	4	2	26	2
B	4	10	6	6	26	2
C	4	4	2	7	19	
A Costa	2	6	7	2	17	
TOTALE	12	36	19	12	88	2

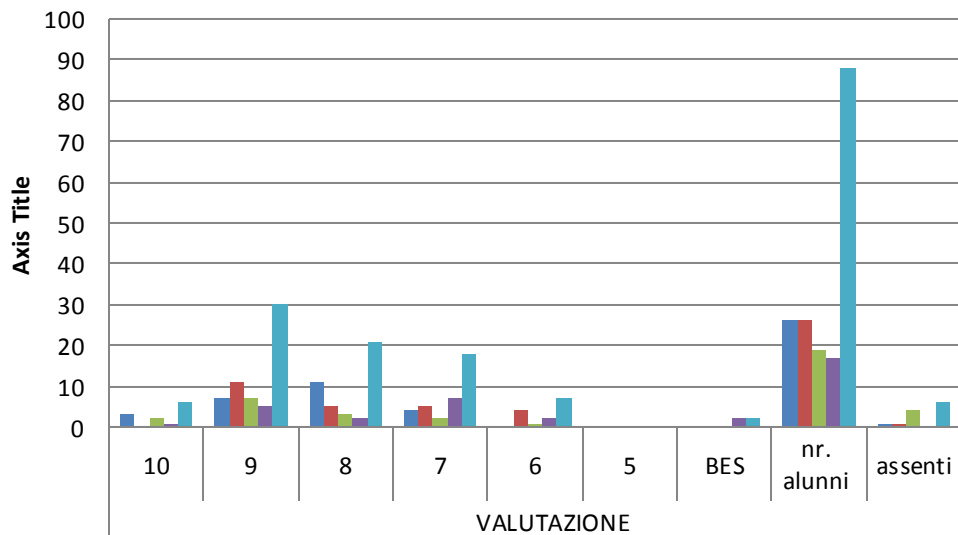
TOTALE 3° BIMESTRE - MATEMATICA
Classi PRIME



TOTALE 2° QUADRIMESTRE - MATEMATICA
Classi PRIME

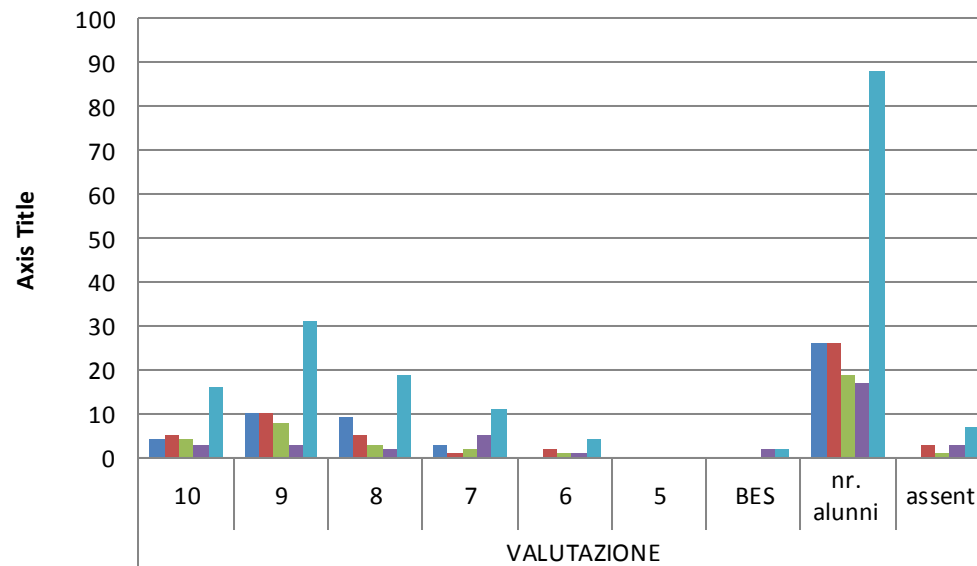


3° BIMESTRE - MATEMATICA
Classi PRIME



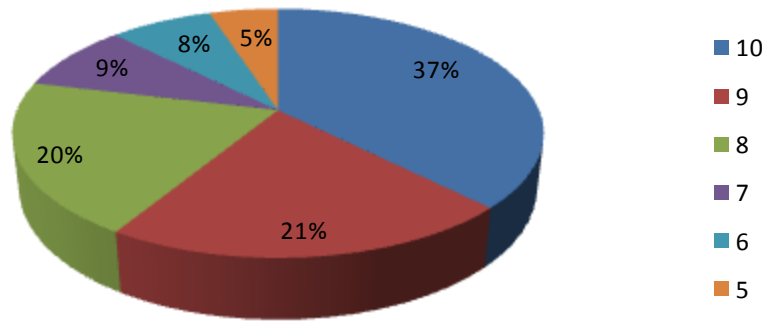
A	3	7	11	4				26	1
B		11	5	5	4			26	1
C	2	7	3	2	1			19	4
A Costa	1	5	2	7	2		2	17	
TOTALE	6	30	21	18	7		2	88	6

2° QUADRIMESTRE - MATEMATICA
Classi PRIME

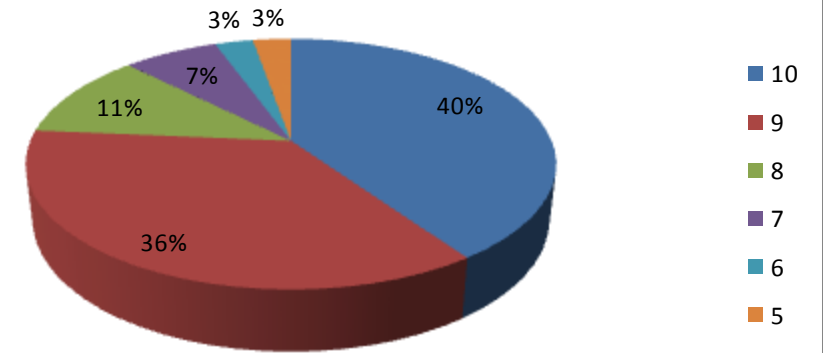


A	4	10	9	3				26	
B	5	10	5	1	2			26	3
C	4	8	3	2	1			19	1
A Costa	3	3	2	5	1		2	17	3
TOTALE	16	31	19	11	4		2	88	7

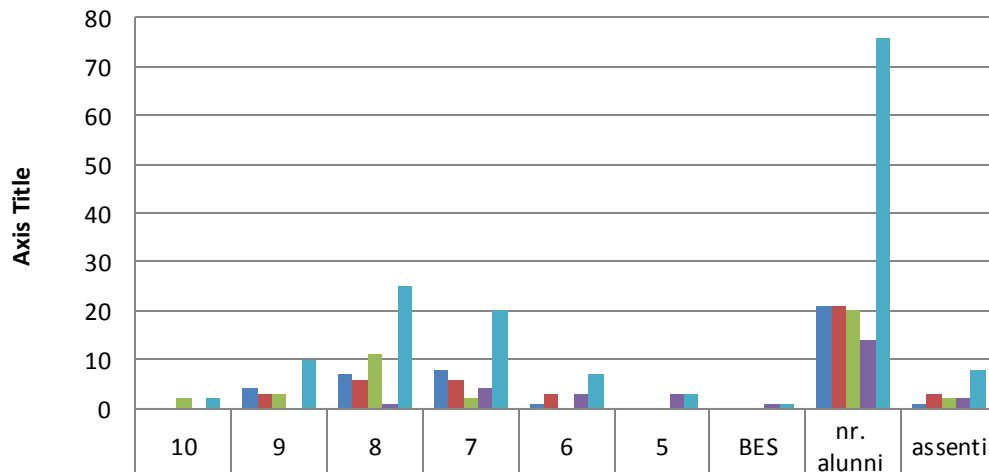
TOTALE 3° BIMESTRE - INGLESE
Classi PRIME



TOTALE 2° QUADRIMESTRE - INGLESE
Classi PRIME

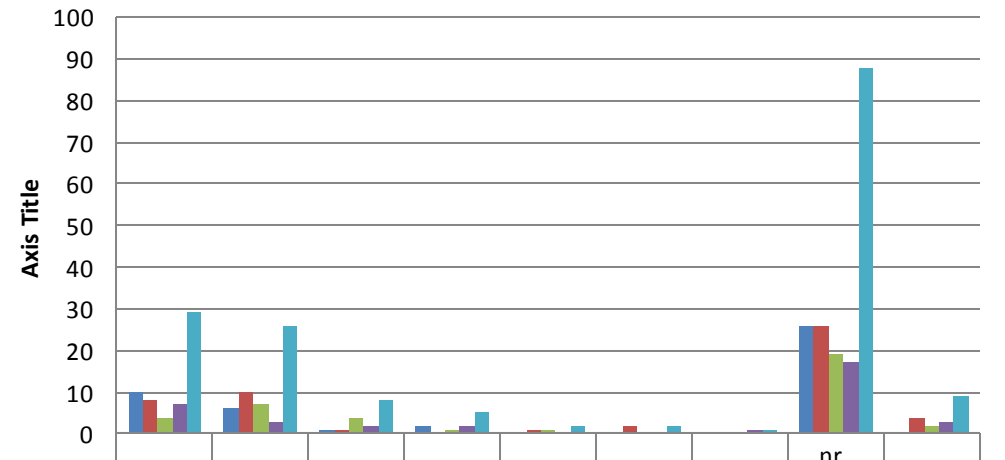


3° BIMESTRE - ITALIANO
Classi SECONDE



	10	9	8	7	6	5	BES	nr. alunni	assenti
A		4	7	8	1			21	1
B		3	6	6	3			21	3
C	2	3	11	2				20	2
A Costa			1	4	3	3	1	14	2
TOTALE	2	10	25	20	7	3	1	76	8

2° QUADRIMESTRE - INGLESE
Classi PRIME



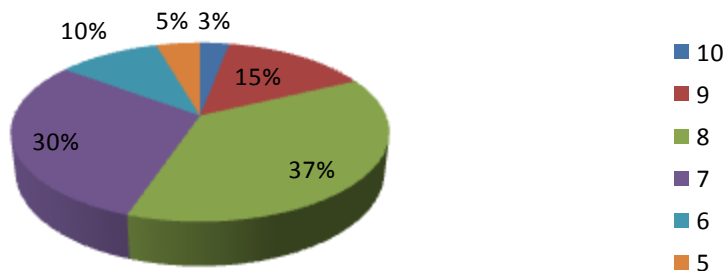
	10	9	8	7	6	5	BES	nr. alunni	assenti
A	10	6	1	2				26	
B	8	10	1		1	2		26	4
C	4	7	4	1	1			19	2
A Costa	7	3	2	2			1	17	3
TOTALE	29	26	8	5	2	2	1	88	9

3° Bimestre

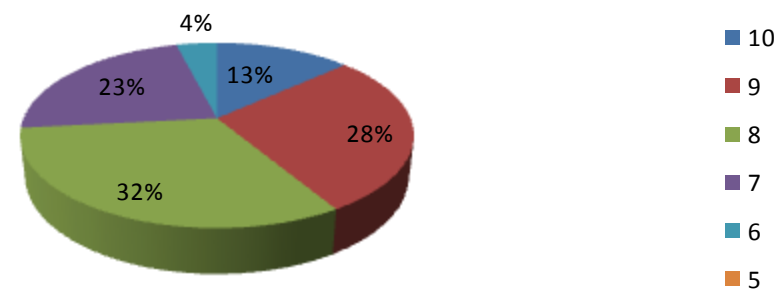
CLASSI SECONDE

2° Quadrimestre

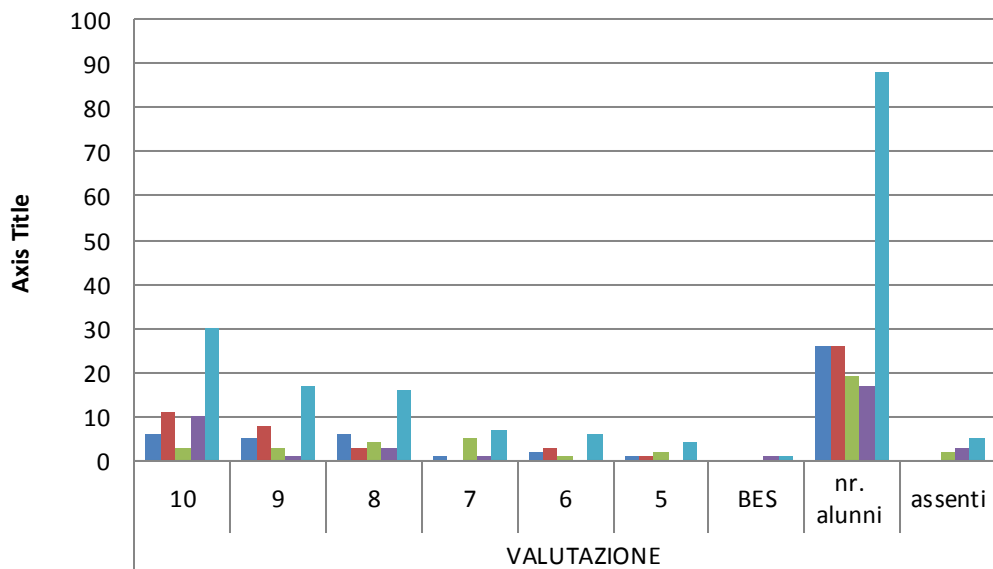
TOTALE 3° BIMESTRE - ITALIANO
Classi SECONDE



TOTALE 2° QUADRIMESTRE - ITALIANO
Classi SECONDE

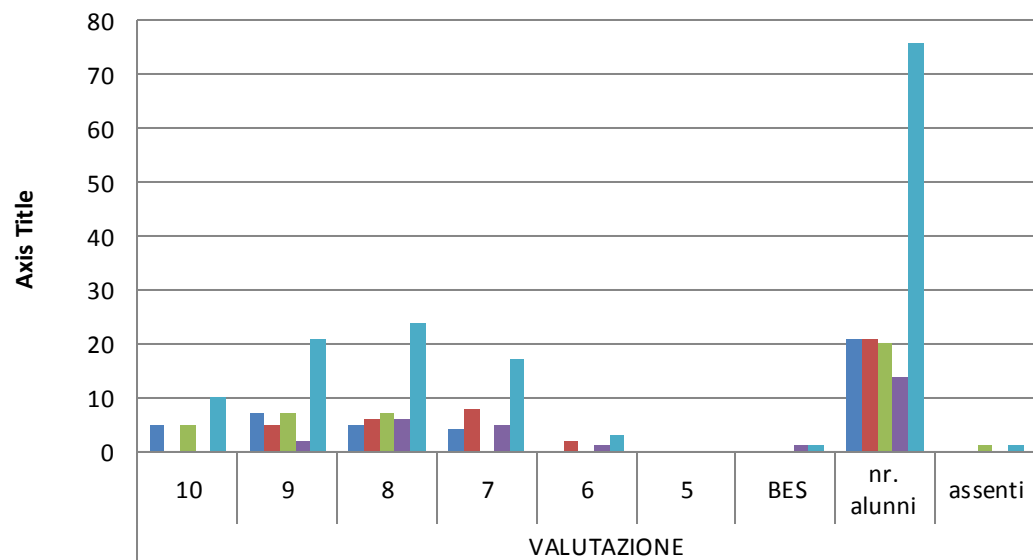


3° BIMESTRE - INGLESE
Classi PRIME



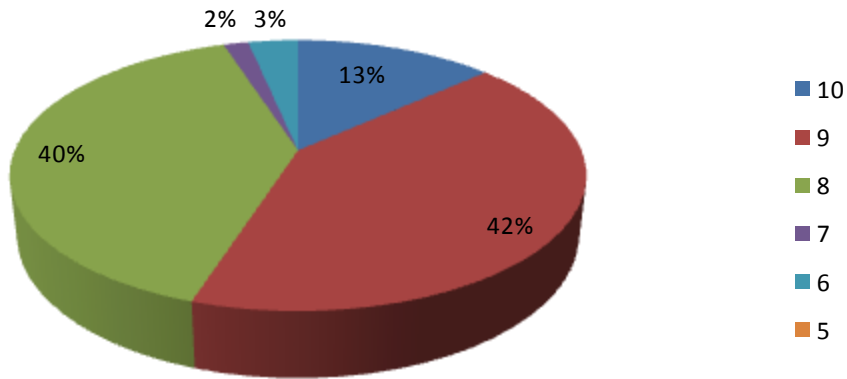
	10	9	8	7	6	5	BES	nr. alunni	assenti
A	6	5	6	1	2	1		26	
B	11	8	3		3	1		26	
C	3	3	4	5	1	2		19	2
A Costa	10	1	3	1			1	17	3
TOTALE	30	17	16	7	6	4	1	88	5

2° QUADRIMESTRE - ITALIANO
Classi SECONDE

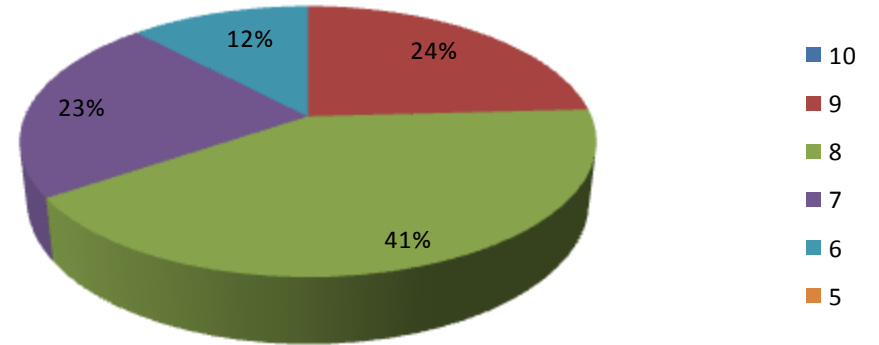


	10	9	8	7	6	5	BES	nr. alunni	assenti
A	5	7	5	4				21	
B		5	6	8	2			21	
C	5	7	7					20	1
A Costa		2	6	5	1		1	14	
TOTALE	10	21	24	17	3		1	76	1

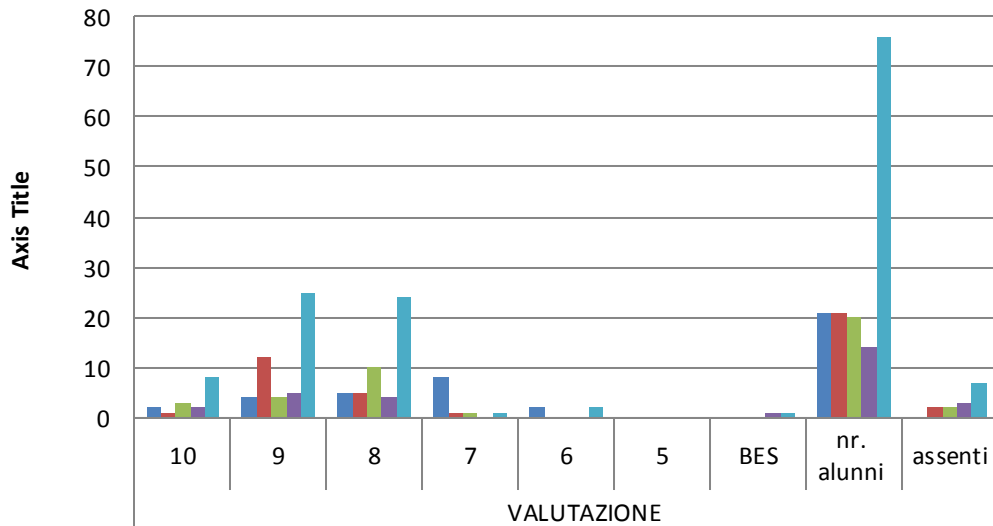
TOTALE 3° BIMESTRE - MATEMATICA
Classi SECONDE



TOTALE 2° QUADRIMESTRE - MATEMATICA
Classi SECONDE

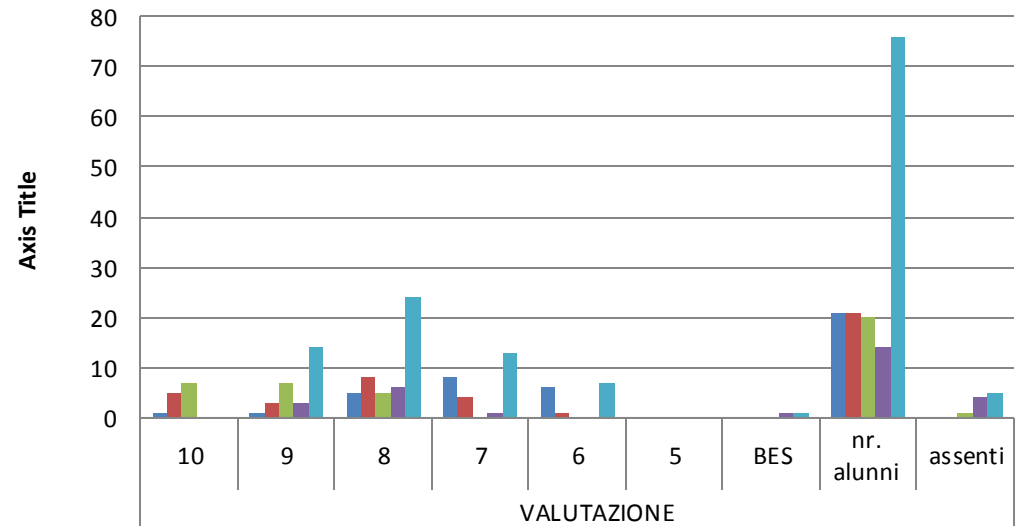


3° BIMESTRE - MATEMATICA
Classi SECONDE



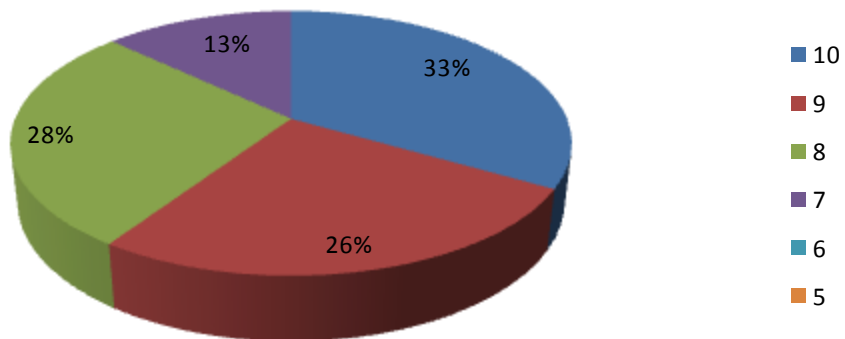
VALUTAZIONE	A	B	C	A Costa	TOTALE
10	2	1	3	2	8
9	4	12	4	5	25
8	5	5	10	4	24
7	8	1	1	0	10
6	2	0	0	0	2
5	0	0	0	0	0
BES	0	0	0	1	1
nr. alunni	21	21	20	14	76
assenti	0	2	2	3	7

2° QUADRIMESTRE - MATEMATICA
Classi SECONDE

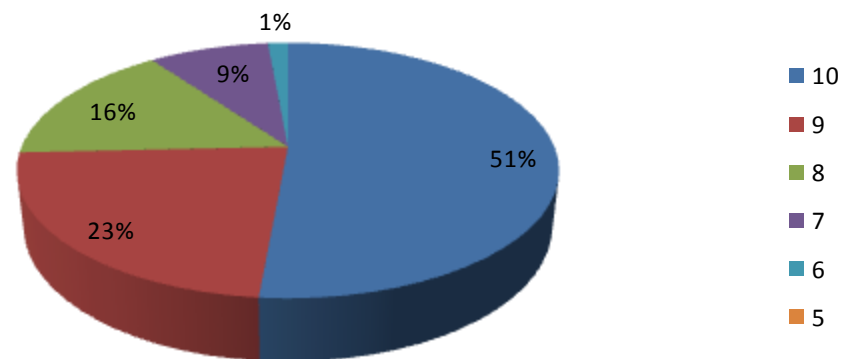


VALUTAZIONE	A	B	C	A Costa	TOTALE
10	1	5	7	0	13
9	1	3	7	3	14
8	5	8	5	6	24
7	8	4	1	1	13
6	6	1	0	0	7
5	0	0	0	0	0
BES	0	0	0	1	1
nr. alunni	21	21	20	14	76
assenti	0	1	1	4	5

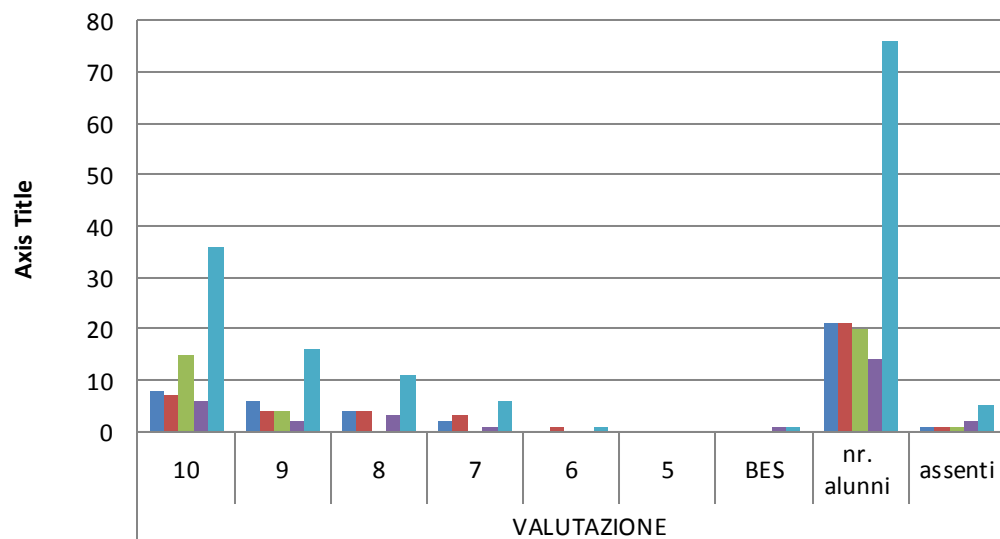
TOTALE 3° BIMESTRE - INGLESE
Classi SECONDE



TOTALE 2° QUADRIMESTRE - INGLESE
Classi SECONDE

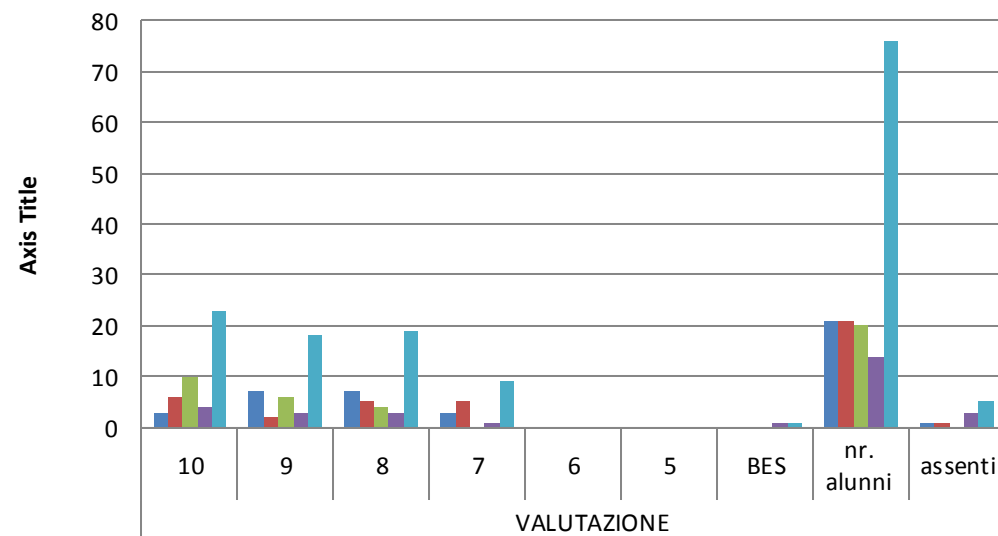


2° QUADRIMESTRE - INGLESE
Classi SECONDE



A	8	6	4	2				21	1
B	7	4	4	3	1			21	1
C	15	4						20	1
A Costa	6	2	3	1			1	14	2
TOTALE	36	16	11	6	1		1	76	5

3° BIMESTRE - INGLESE
Classi SECONDE



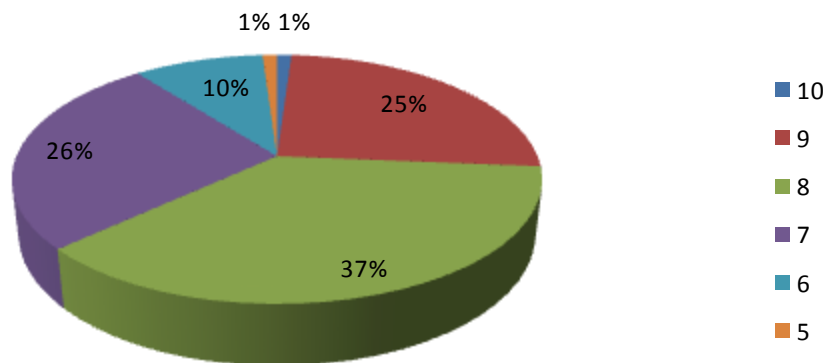
A	3	7	7	3				21	1
B	6	2	5	5				21	1
C	10	6	4					20	
A Costa	4	3	3	1			1	14	3
TOTALE	23	18	19	9			1	76	5

3° Bimestre

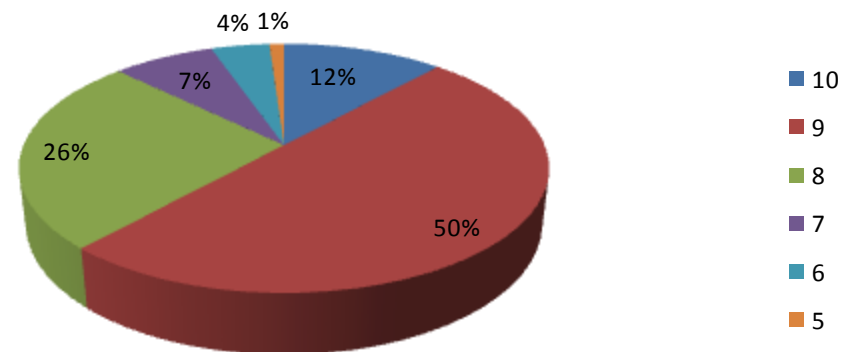
CLASSI TERZE

2° Quadrimestre

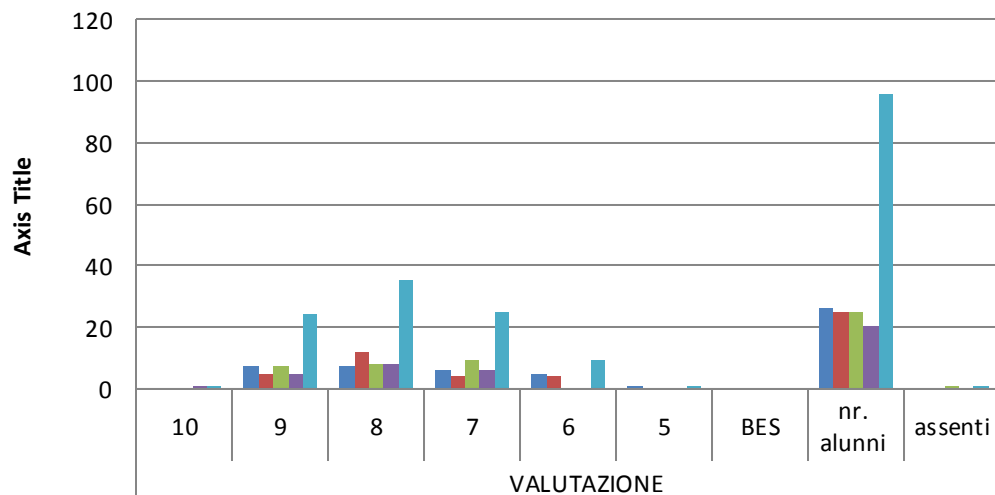
TOTALE 3° BIMESTRE - ITALIANO
Classi TERZE



TOTALE 2° QUADRIMESTRE - ITALIANO
Classi TERZE

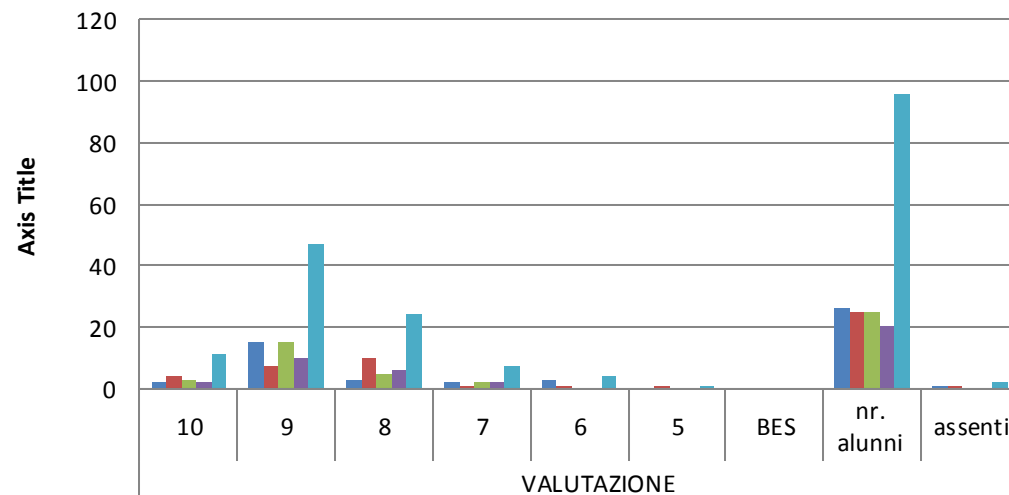


3° BIMESTRE - ITALIANO
Classi TERZE



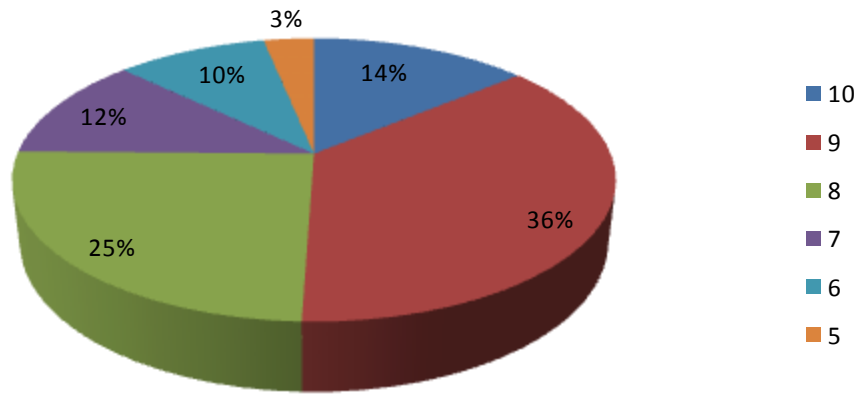
A	1	5	7	6	5	1		26	
B		5	12	4	4			25	
C		7	8	9				25	1
A Costa	1	5	8	6				20	
TOTALE	1	24	35	25	9	1		96	1

2° QUADRIMESTRE - ITALIANO
Classi TERZE

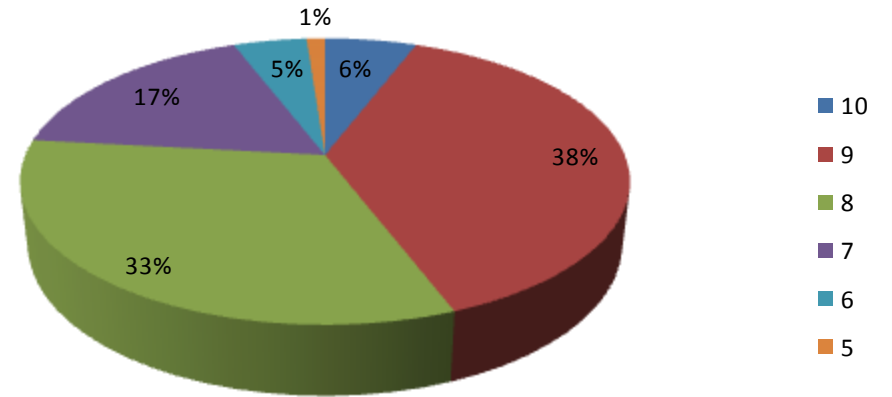


A	2	15	3	2	3			26	1
B	4	7	10	1	1	1		25	1
C	3	15	5	2				25	
A Costa	2	10	6	2				20	
TOTALE	11	47	24	7	4	1		96	2

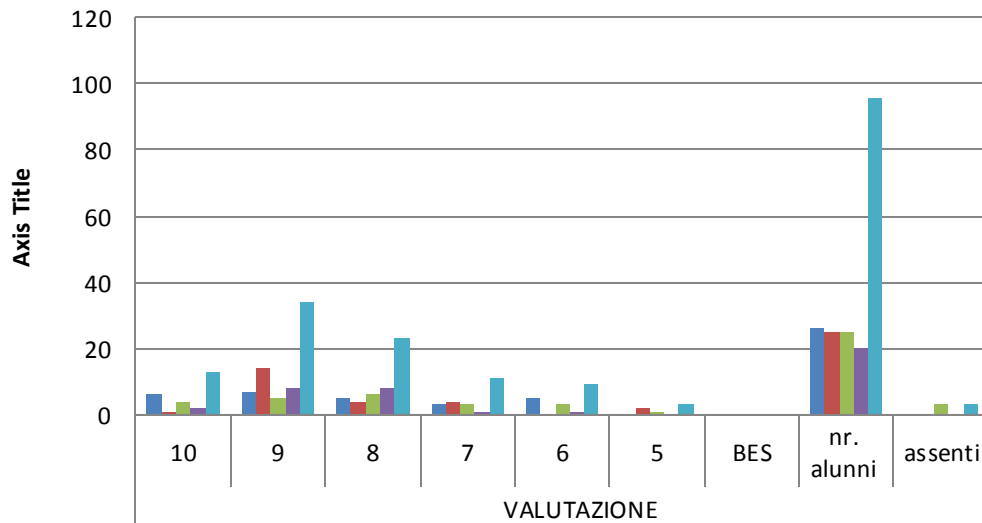
TOTALE 3° BIMESTRE - MATEMATICA
Classi TERZE



TOTALE 2° QUADRIMESTRE - MATEMATICA
Classi TERZE

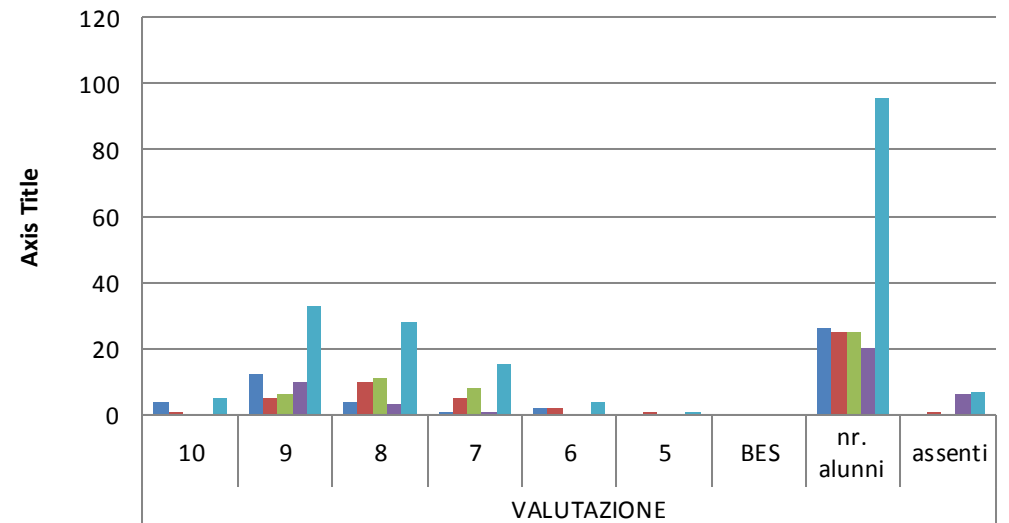


3° BIMESTRE - MATEMATICA
Classi TERZE



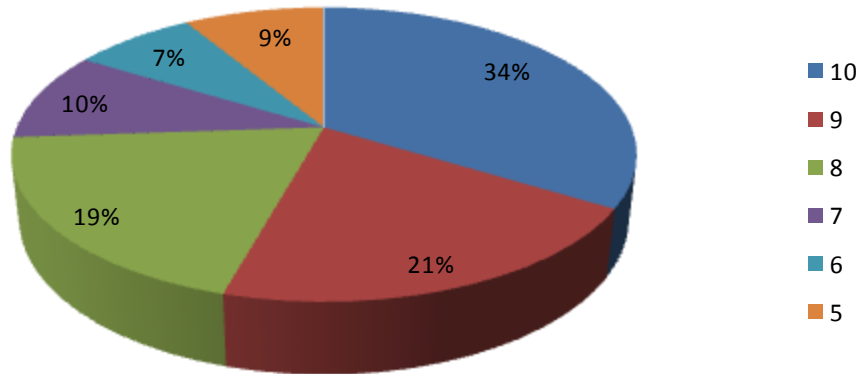
	10	9	8	7	6	5	BES	nr. alunni	assenti
A	6	7	5	3	5			26	
B	1	14	4	4		2		25	
C	4	5	6	3	3	1		25	3
A Costa	2	8	8	1	1			20	
TOTALE	13	34	23	11	9	3		96	3

2° QUADRIMESTRE - MATEMATICA
Classi TERZE

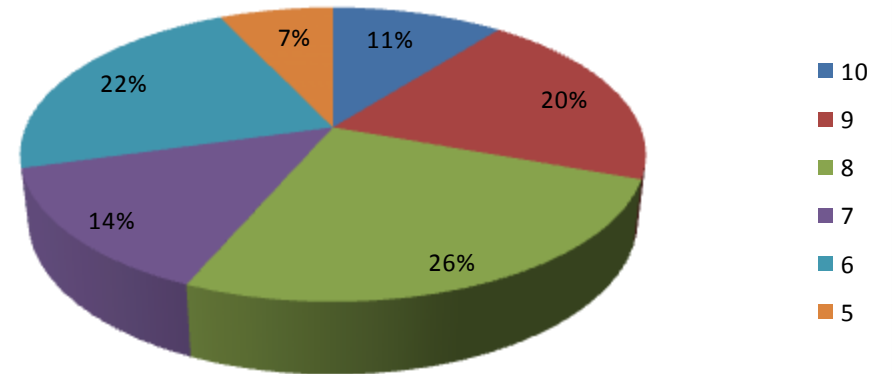


	10	9	8	7	6	5	BES	nr. alunni	assenti
A	4	12	4	1	2			26	
B	1	5	10	5	2	1		25	1
C		6	11	8				25	
A Costa		10	3	1				20	6
TOTALE	5	33	28	15	4	1		96	7

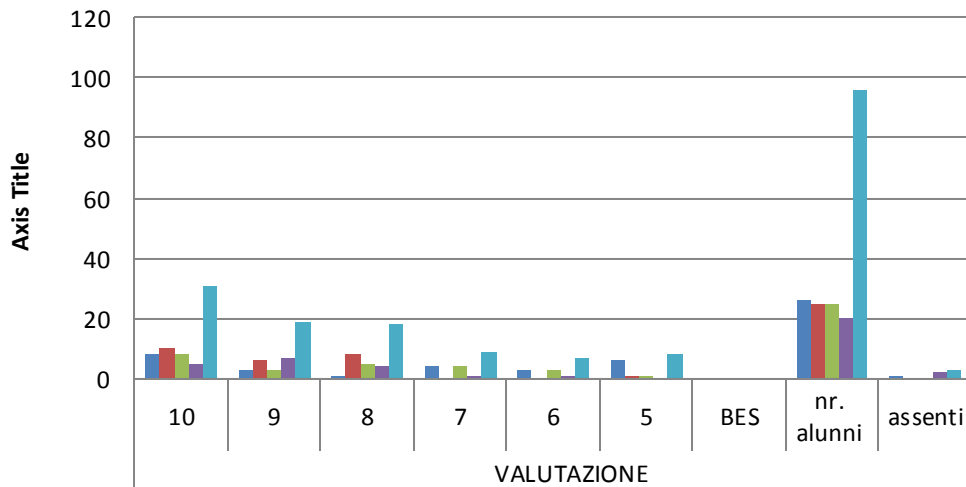
TOTALE 3° BIMESTRE - INGLESE
Classi TERZE



TOTALE 2° QUADRIMESTRE - INGLESE
Classi TERZE

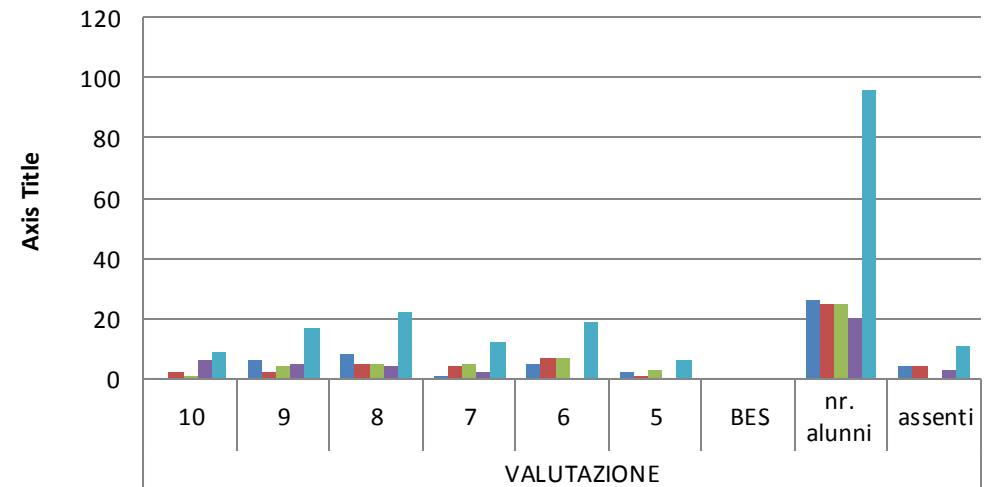


3° BIMESTRE - INGLESE
Classi TERZE



	10	9	8	7	6	5	BES	nr. alunni	assenti
A	8	3	1	4	3	6		26	1
B	10	6	8			1		25	
C	8	3	5	4	3	1		25	
A Costa	5	7	4	1	1			20	2
TOTALE	31	19	18	9	7	8		96	3

2° QUADRIMESTRE - INGLESE
Classi TERZE



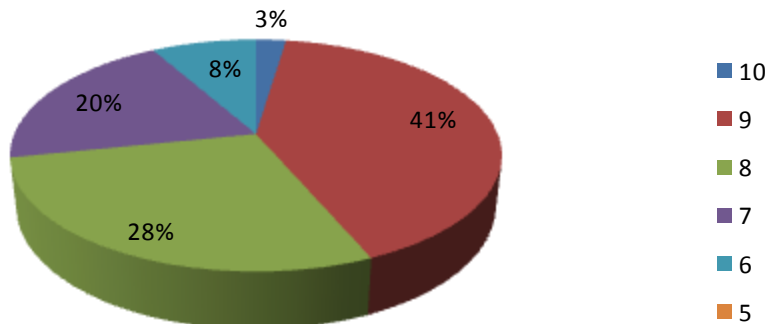
	10	9	8	7	6	5	BES	nr. alunni	assenti
A		6	8	1	5	2		26	4
B	2	2	5	4	7	1		25	4
C	1	4	5	5	7	3		25	
A Costa	6	5	4	2				20	3
TOTALE	9	17	22	12	19	6		96	11

3° Bimestre

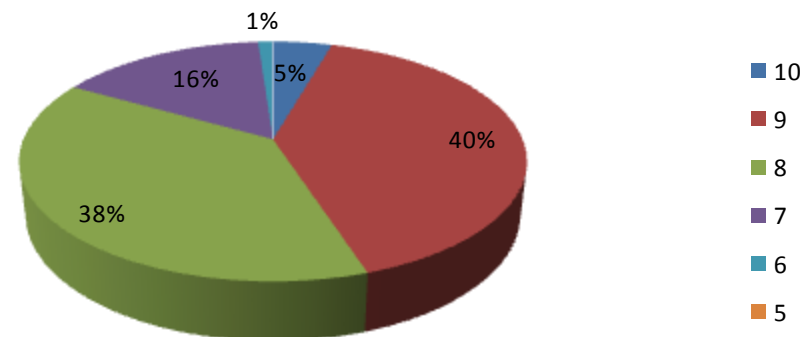
CLASSI QUARTE

2° Quadrimestre

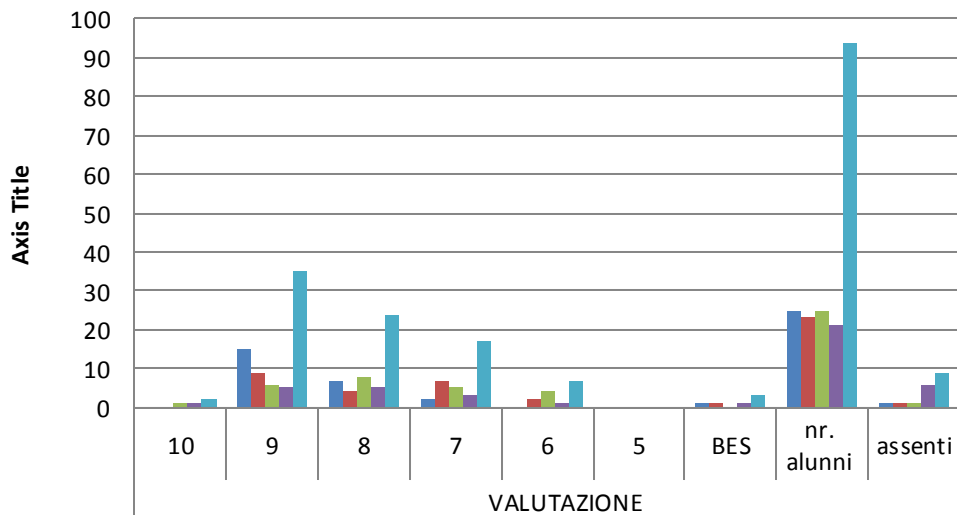
TOTALE 3° BIMESTRE - ITALIANO
Classi QUARTE



TOTALE 2° QUADRIMESTRE - ITALIANO
Classi QUARTE

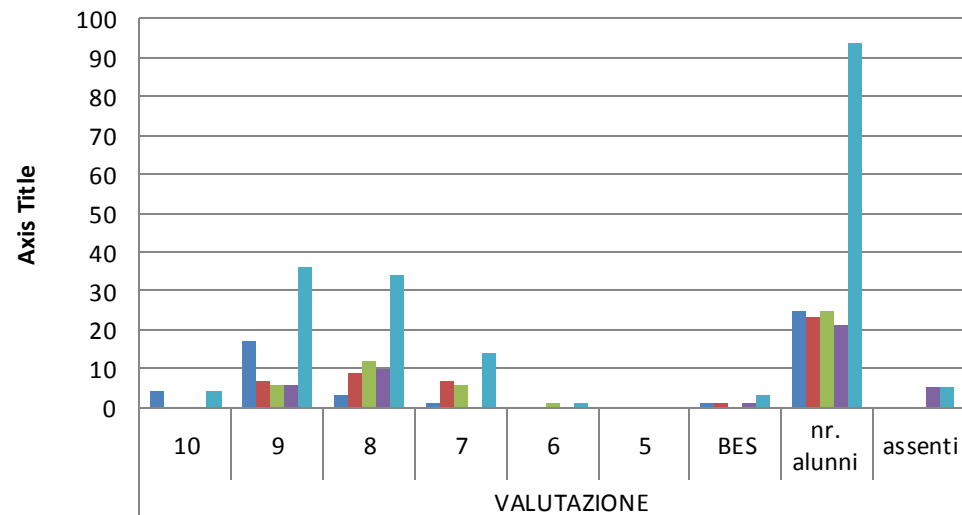


3° BIMESTRE - ITALIANO
Classi QUARTE



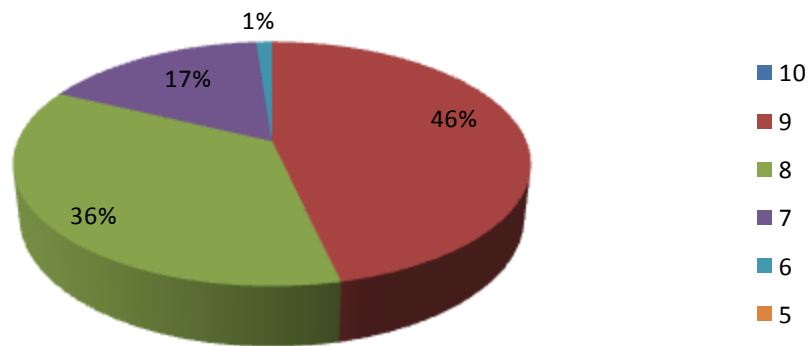
	VALUTAZIONE								
	10	9	8	7	6	5	BES	nr. alunni	assenti
A	2	15	7	2	0	0	1	25	1
B	0	9	4	7	2	0	1	23	1
C	1	6	8	5	4	0	0	25	1
A Costa	1	5	5	3	1	0	1	21	6
TOTALE	2	35	24	17	7	0	3	94	9

2° QUADRIMESTRE - ITALIANO
Classi QUARTE

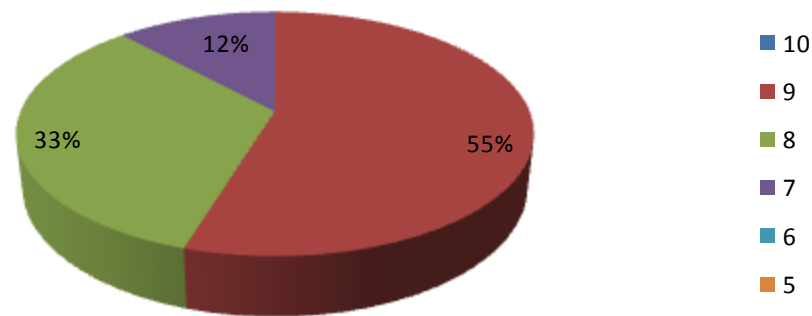


	VALUTAZIONE								
	10	9	8	7	6	5	BES	nr. alunni	assenti
A	4	17	3	1	0	0	1	25	0
B	0	7	9	7	0	0	1	23	0
C	0	6	12	6	1	0	0	25	0
A Costa	0	6	10	0	0	0	1	21	5
TOTALE	4	36	34	14	1	0	3	94	5

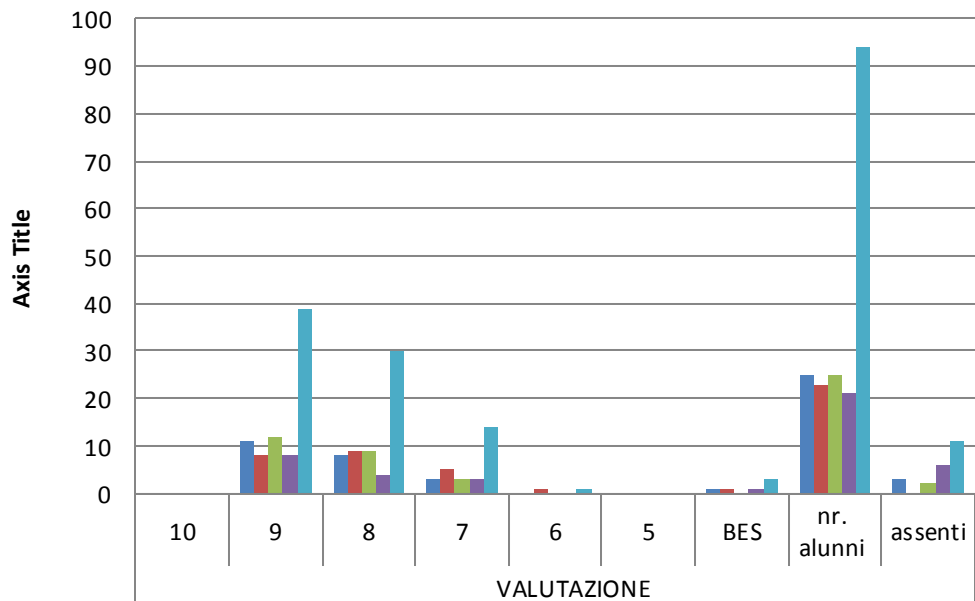
TOTALE 3° BIMESTRE - MATEMATICA
Classi QUARTE



TOTALE 2° QUADRIMESTRE - MATEMATICA
Classi QUARTE

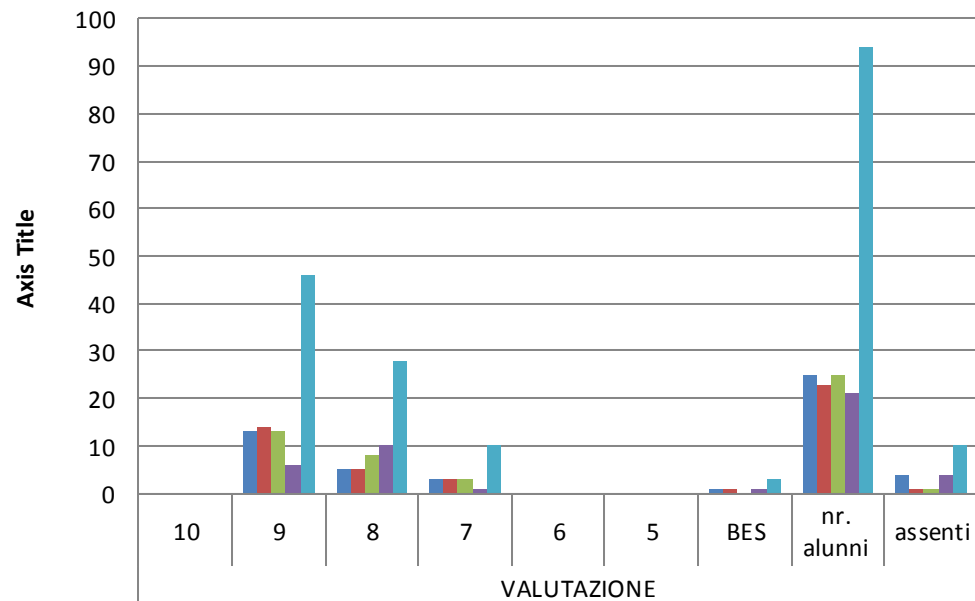


3° BIMESTRE - MATEMATICA
Classi QUARTE



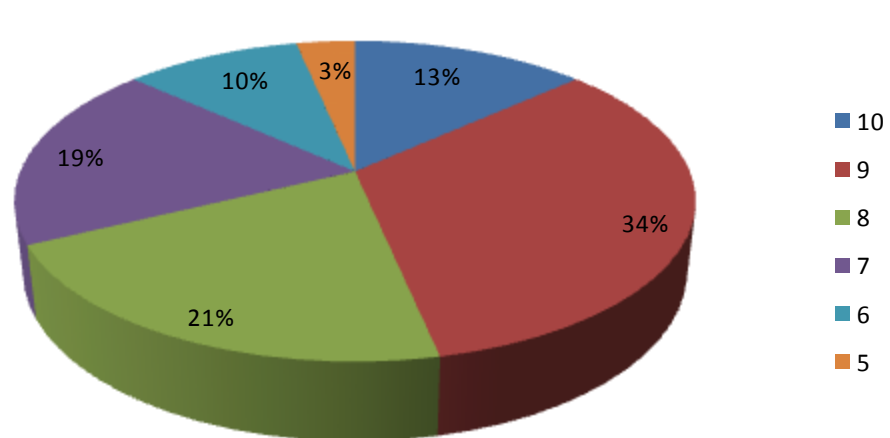
A		11	8	3			1	25	3
B		8	9	5	1		1	23	
C		12	9	3				25	2
A Costa		8	4	3			1	21	6
TOTALE		39	30	14	1		3	94	11

2° QUADRIMESTRE - MATEMATICA
Classi QUARTE

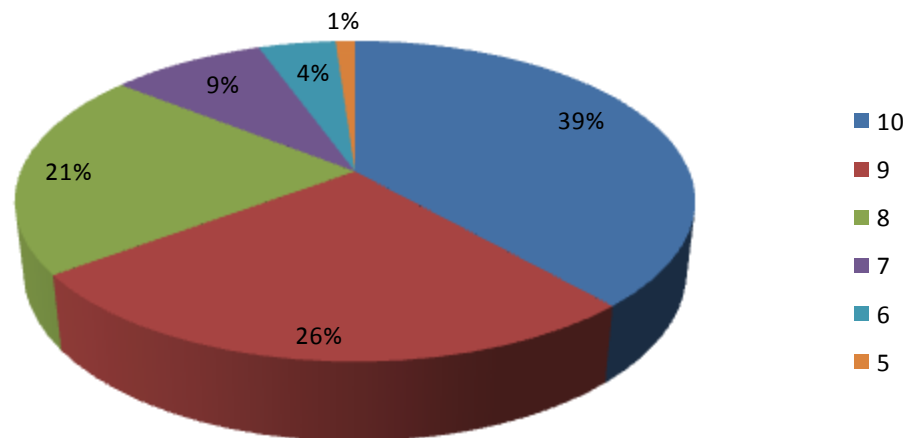


A		13	5	3			1	25	4
B		14	5	3			1	23	1
C		13	8	3				25	1
A Costa		6	10	1			1	21	4
TOTALE		46	28	10			3	94	10

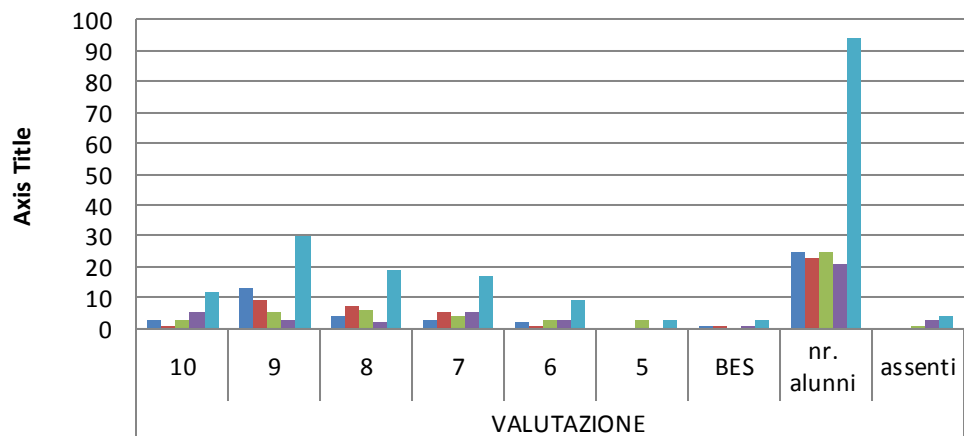
TOTALE 3° BIMESTRE - INGLESE
Classi QUARTE



TOTALE 2° QUADRIMESTRE - INGLESE
Classi QUARTE

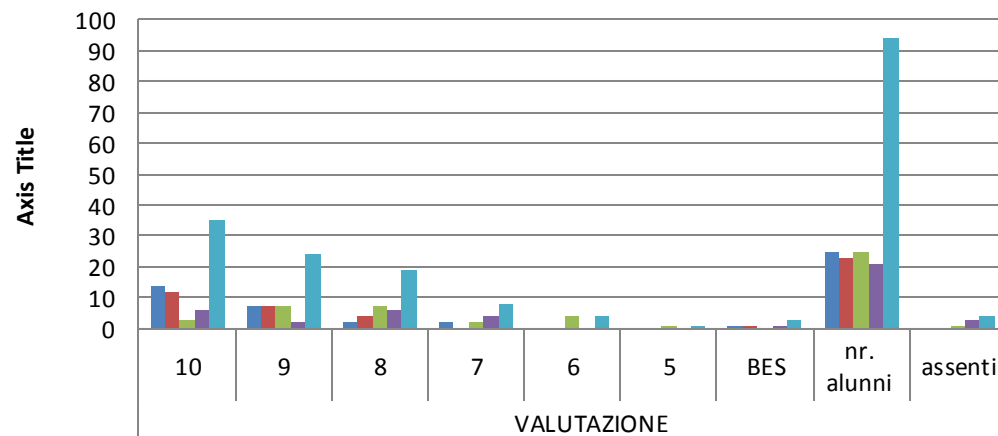


3° BIMESTRE - INGLESE
Classi QUARTE



	VALUTAZIONE								
A	3	13	4	3	2		1	25	
B	1	9	7	5	1		1	23	
C	3	5	6	4	3	3		25	1
A Costa	5	3	2	5	3		1	21	3
TOTALE	12	30	19	17	9	3	3	94	4

2° QUADRIMESTRE - INGLESE
Classi QUARTE



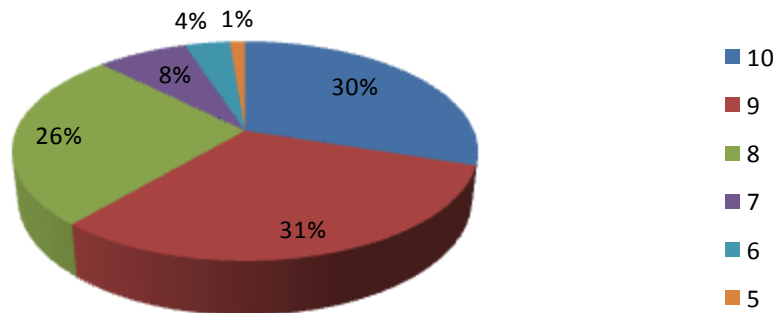
	VALUTAZIONE								
A	14	7	2	2			1	25	
B	12	7	4				1	23	
C	3	7	7	2	4	1		25	1
A Costa	6	2	6	4			1	21	3
TOTALE	35	24	19	8	4	1	3	94	4

3° Bimestre

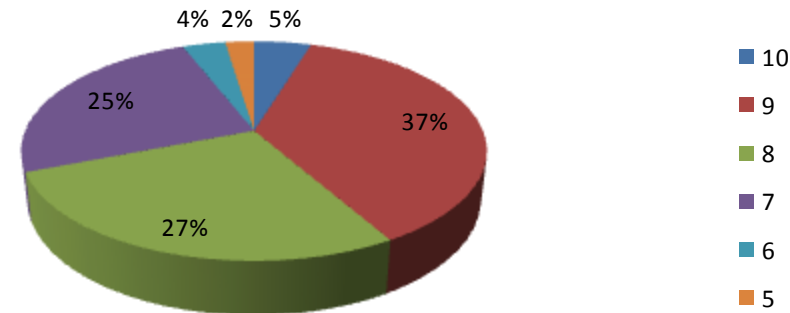
CLASSI QUINTE

2° Quadrimestre

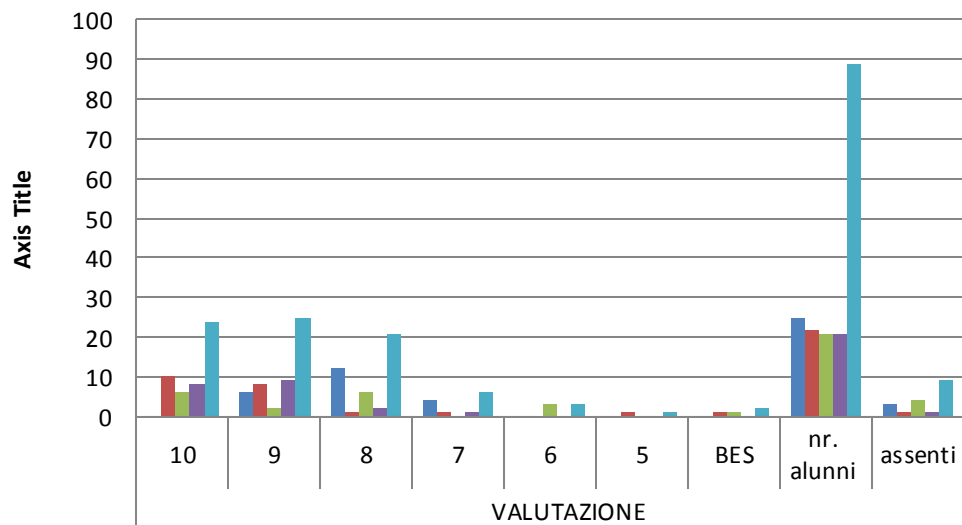
TOTALE 3° BIMESTRE - ITALIANO
Classi QUINTE



TOTALE 2° QUADRIMESTRE - ITALIANO
Classi QUINTE

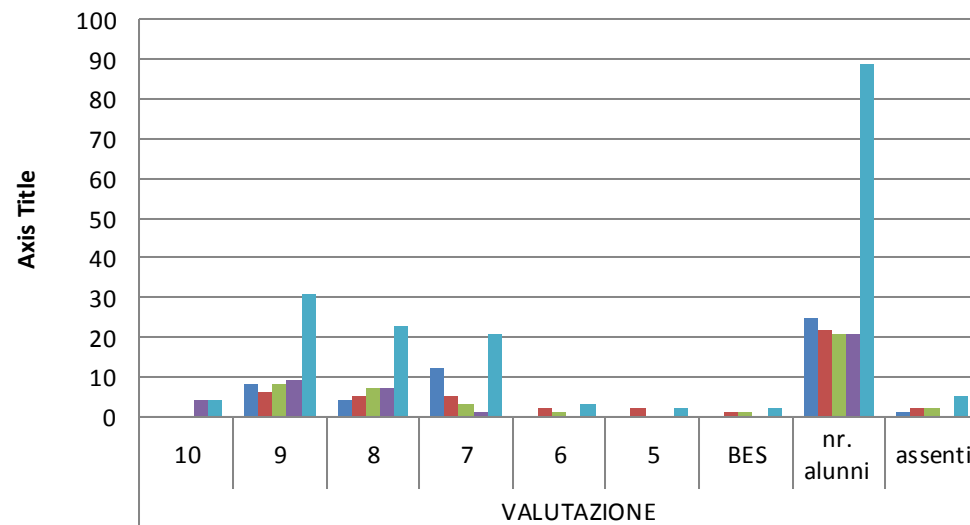


3° BIMESTRE - ITALIANO
Classi QUINTE



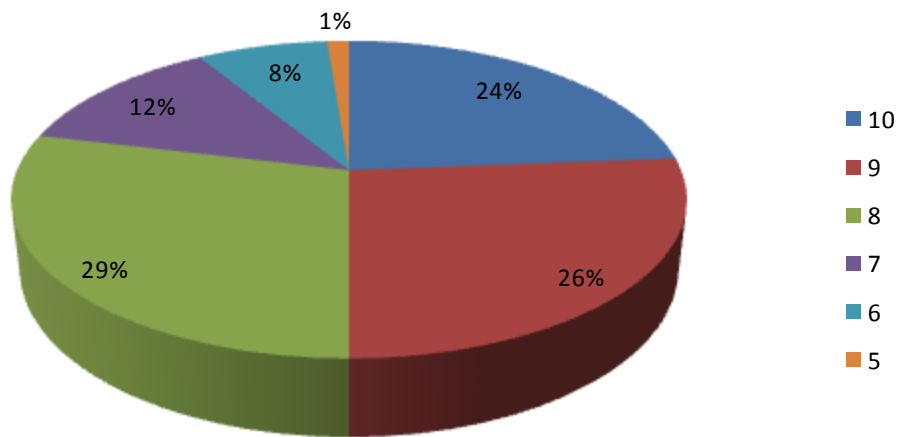
	10	9	8	7	6	5	BES	nr. alunni	assenti
A	6	12	4					25	3
B	10	8	1	1		1	1	22	1
C	6	2	6		3		1	21	4
D	8	9	2	1				21	1
TOTALE	24	25	21	6	3	1	2	89	9

2° QUADRIMESTRE - ITALIANO
Classi QUINTE

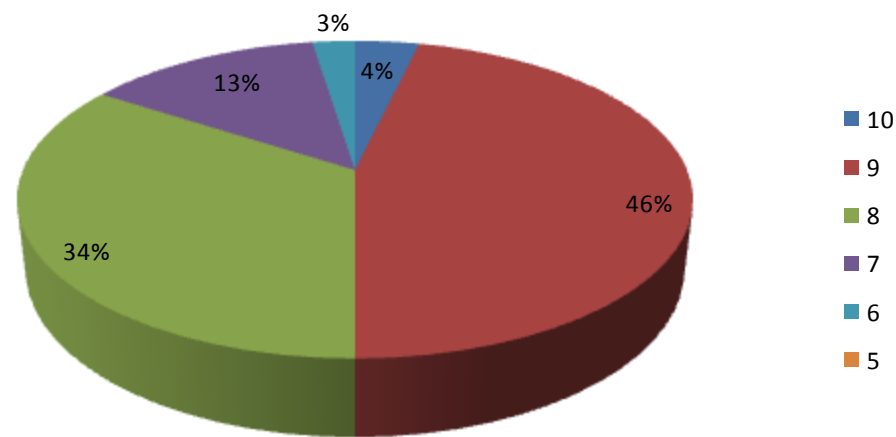


	10	9	8	7	6	5	BES	nr. alunni	assenti
A	8	4	12					25	1
B	6	5	5	2	2	1	1	22	2
C	8	7	3	1			1	21	2
D	4	9	7	1				21	
TOTALE	4	31	23	21	3	2	2	89	5

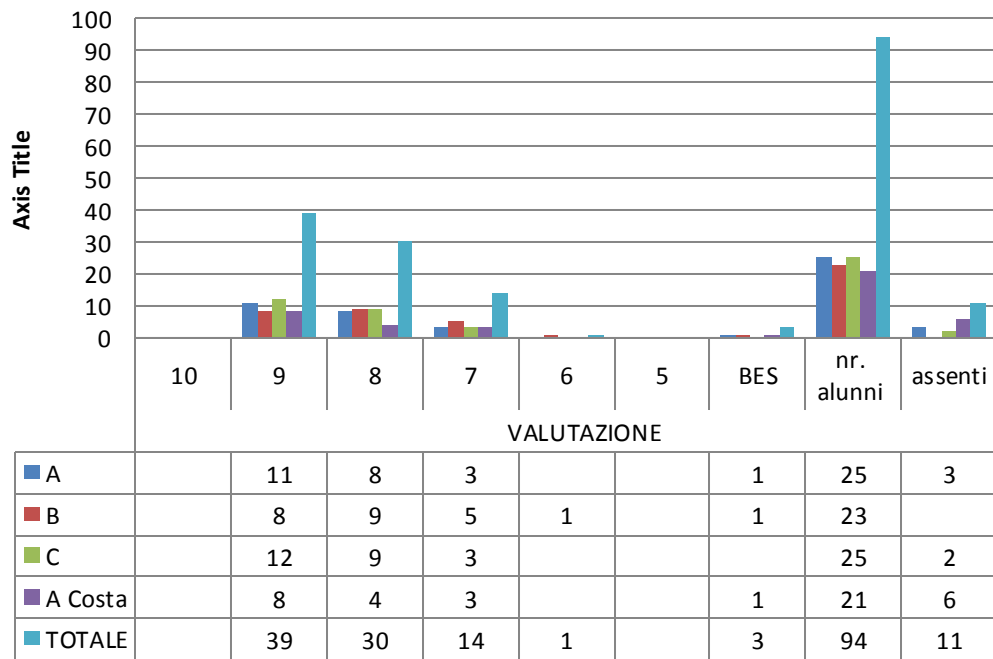
TOTALE 3° BIMESTRE - MATEMATICA
Classi QUINTE



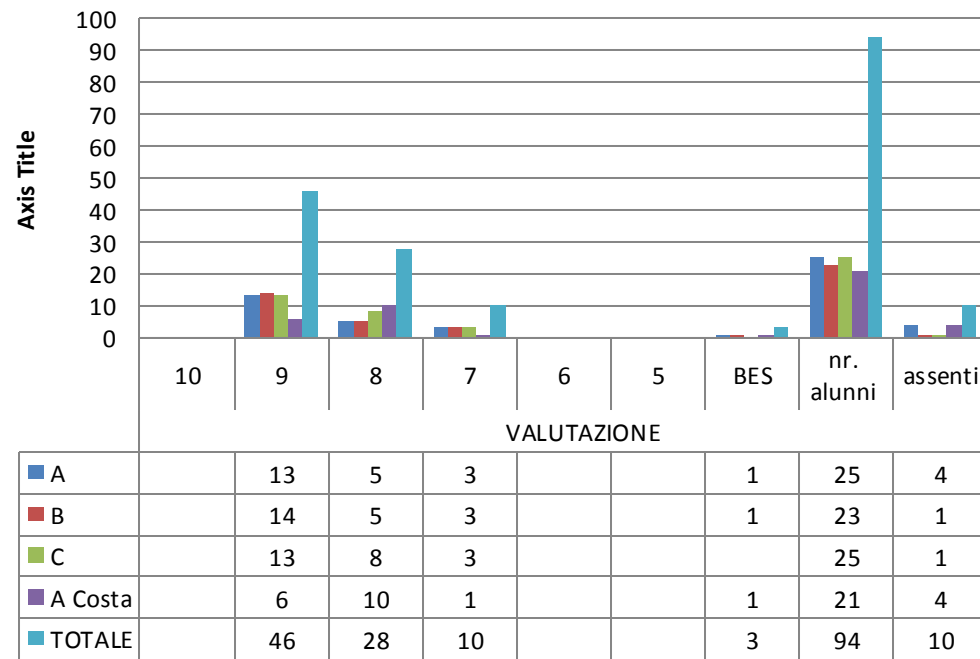
TOTALE 2° QUADRIMESTRE - MATEMATICA
Classi QUINTE



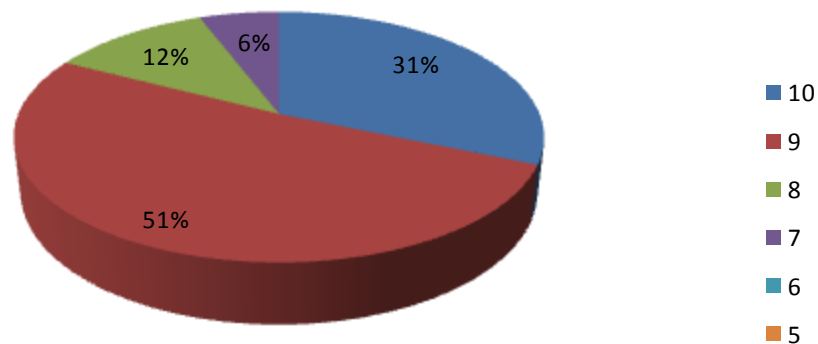
3° BIMESTRE - MATEMATICA
Classi QUARTE



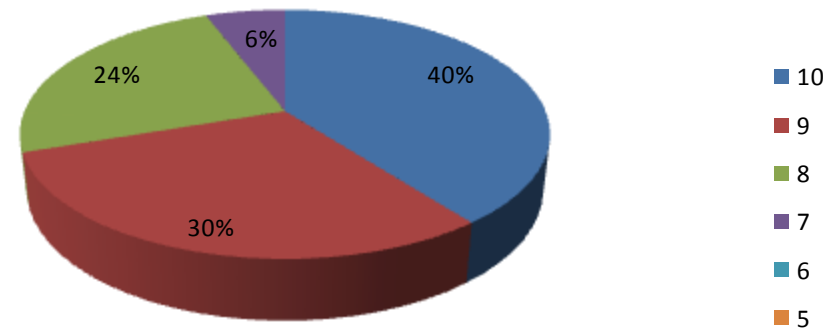
2° QUADRIMESTRE - MATEMATICA
Classi QUARTE



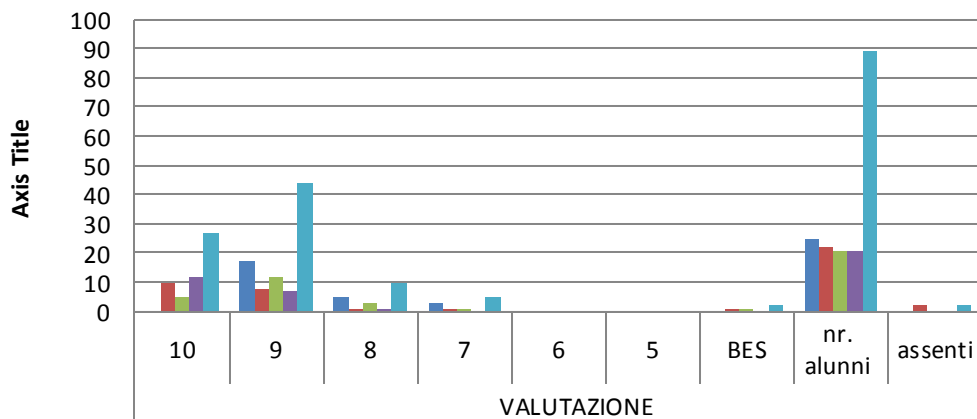
TOTALE 3° BIMESTRE - INGLESE
Classi QUINTE



TOTALE 2° QUADRIMESTRE - INGLESE
Classi QUINTE

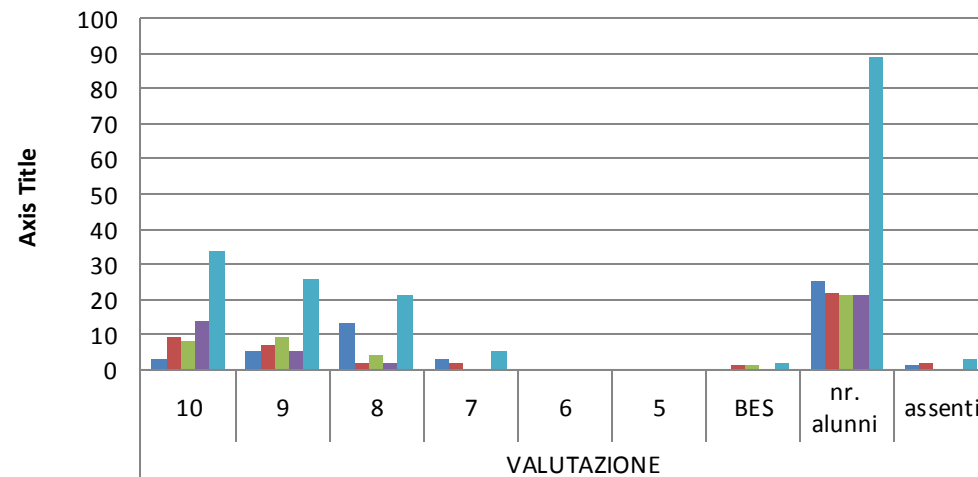


3° BIMESTRE - INGLESE
Classi QUINTE



	10	9	8	7	6	5	BES	nr. alunni	assenti
A		17	5	3				25	
B	10	8	1	1			1	22	2
C	5	12	3	1			1	21	
D	12	7	1					21	
TOTALE	27	44	10	5			2	89	2

2° QUADRIMESTRE - INGLESE
Classi QUINTE



	10	9	8	7	6	5	BES	nr. alunni	assenti
A	3	5	13	3				25	1
B	9	7	2	2			1	22	2
C	8	9	4				1	21	
D	14	5	2					21	
TOTALE	34	26	21	5			2	89	3

La sottoscritta ritiene opportuno non relazionare i dati in forma discorsiva /rieppilogativa in quanto la LETTURA dei GRAFICI risulta chiara ed esplicativa .